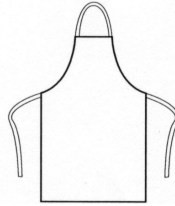


PR101**APRON****POLYESTER/COTTON (NO POCKET)**

CARTON	PACK	NO. SKU'S
72	12	5

**Fabric**

Klopman Superbandmaster
65%/35% polyester/cotton twill with crease resist finish. 210gsm

Colours

Black, Bottle, Burgundy, Navy, Red

Sizes

One size

Features

- Polyester cotton bib apron in durable Klopman fabric
- Black "anti-tangle" ties (white ties on the white apron)
- Width 72cm
- Length from the waist 58cm
- Total length 87cm
- Crease resist finish
- Industrial laundry 85°C
- Domestic wash 60°C
- Made from OEKO-TEX® Standard 100 Fabric

Country of Origin

Morocco

Carton Dimensions

42cm x 61cm x 22 cm

Carton Weight

10.80 kg approx.

VAT Code

6211 43 1000

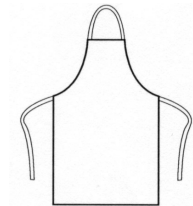
Colour	Pantone	C	M	Y	K
Black	Black	0	0	0	100
Bottle	560	69	0	60	76
Burgundy	216	0	83	34	47
Navy	2766	100	87	0	34
Red	200	0	100	65	15



INDUSTRIAL LAUNDERING 85°C MAXIMUM

PR102**APRON****COTTON (NO POCKET)**

CARTON	PACK	NO. SKU'S
72	12	2

**Fabric**

Heavy weight pre-shrunk 100% cotton twill. 240gsm

Colours

White, Black

Sizes

One size

Features

- 100% cotton bib apron
- Self fabric ties
- Width 60cm
- Length from the waist 62cm
- Total length 87cm
- Absorbent cotton twill
- Made from OEKO-TEX® Standard 100 Fabric

Country of Origin

Bangladesh

Carton Dimensions

42cm x 61cm x 22 cm

Carton Weight

10.80 kg approx.

VAT Code

6211 42 1000

Colour	Pantone	C	M	Y	K
White	White	0	0	0	0
Black	Black	0	0	0	100



INDUSTRIAL LAUNDERING 85°C MAXIMUM