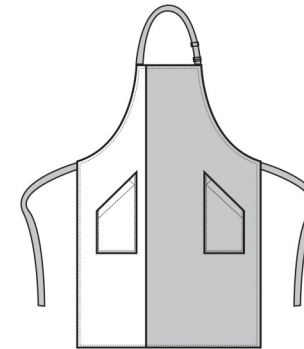


CARTON	PACK	NO. SKU'S
72	12	12

PR162 CONTRAST BIB APRON



Fabric: 65%/35% Polyester/Cotton twill. 195gsm

Colours Black/Dark Grey, Black/Hot Pink, Black/Lime, Black/Red, Black/Turquoise, Brown/Natural, Orange/ Black, Black/ Purple, Sapphire/Dark Grey, Purple/Magenta, Burgundy/ Nat-

Sizes One size

Features

- Classic Premier bib apron with contrast coloured panel
- Self fabric neck
- Self fabric ties 90cm long
- Width 72cm
- Length 86cm
- Sliding adjusting buckle
- Two front side pockets with slanted opening
- Centre of apron fits an A4 portrait print.
- Made from OEKO-TEX® Standard 100 Fabric

Country of Origin China

Carton Dimensions 41cm x 60cm x 24 cm

Carton Weight 10.80 kg approx.

VAT Code 6211 43 1000



INDUSTRIAL LAUNDERING 85°C MAXIMUM

Colour	Pantone	C	M	Y	K
Black	Black	0	0	0	100
Brown	476	30	72	74	84
Dark Grey	431c	11	0	0	65
Hot Pink	214c	0	100	24	4
Lime	382	29	0	96	0
Natural	1205	0	5	31	0
Red	200	0	100	65	15
Turquoise	312	89	0	11	0
Orange	1655	0	65	87	0
Magenta	Magenta c	0	100	0	0
Burgundy	216c	0	83	34	47
Purple	269	82	98	5	26
Sapphire	300	99	51	0	0
Dark Grey	431c	11	0	0	65

Marketing Description

A classic full bib apron with a contrast coloured panel appearing along the length of the right hand side. The colours used on this apron form part of the 'Colours' collection from Premier, so the customer can be assured of an exact colour match in uniforms across their service teams.