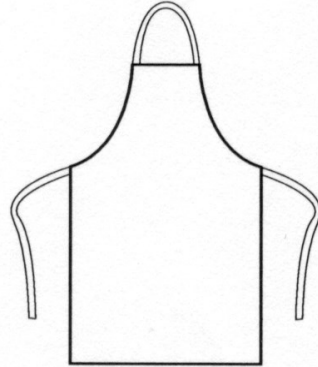


**PR165****ESSENTIAL BIB APRON**

CARTON	PACK	NO. SKU'S
100	10	1

**Fabric**

80% Polyester, 20% Polyester Cotton twill. 170gsm

**Colours** Black**Sizes** One size

**Features**

- Essential Premier bib apron
- Self fabric neck
- Self fabric ties 75cm long
- Width 67cm
- Length 78cm
- Ideal for promotions & events

**Country of Origin** China**Carton Dimensions** 41cm x 60cm x 24 cm**Carton Weight** 10.80 kg approx.**VAT Code** 6211 43 1000

Colour	Pantone	C	M	Y	K
Black	Black	0	0	0	100



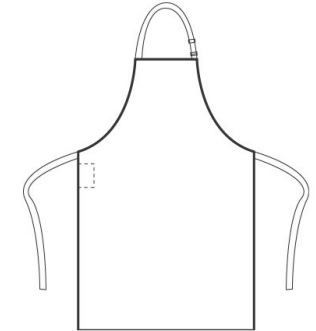
INDUSTRIAL LAUNDERING 85°C MAXIMUM

**PR167****POLYESTER BIB APRON**

CARTON	PACK	NO. SKU'S
72	12	4

**Fabric**

100% Polyester Twill. 195gsm

**Colours** Black, Dark Grey, Red, White,**Sizes** One size

**Features**

- Classic Premier bib apron available in four colours
- Self fabric neck
- Self fabric ties 90cm long
- Width 72cm
- Length 86cm
- Sliding adjusting buckle

**Country of Origin** China**Carton Dimensions** 41cm x 60cm x 24 cm**Carton Weight** 10.80 kg approx.**VAT Code** 6211 43 1000

Colour	Pantone	C	M	Y	K
Black	Black	0	0	0	100
Dark Grey	431c	11	0	0	65
Red	200	0	100	65	15
White	White	0	0	0	0

**Marketing Description**

A 100% Polyester full bib apron with an adjustable buckle on the neckline. Available in four colours. A great budget apron for events and outdoor catering functions.



INDUSTRIAL LAUNDERING 85°C MAXIMUM