

CARTON	PACK	NO. SKU'S
12	3	30

**PR686****'CAMELLIA' BEAUTY AND SPA TUNIC****Fabric**

100% Polyester plain weave, 185gsm

**Colours**

Black, Black with Hot Pink zip, Black with Turquoise zip

**Sizes**

6, 8, 10, 12, 14, 16, 18, 20, 22, 24

**Features**

- Beauty and Spa tunic with cross over neckline and asymmetric zip front
- Short sleeve with vented cuff
- Side vents
- Princess seams with topstitch detail for flattering fit
- Easycare

**Country of Origin**

China

**Carton Dimensions**

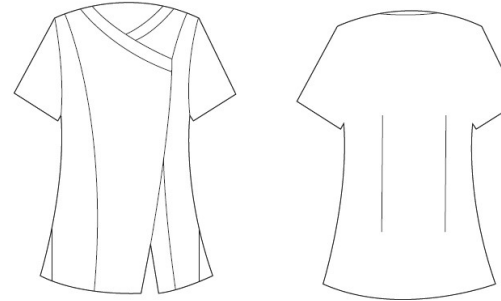
60cm x 44cm x 17cm

**Carton Weight**

6.20 kg approx.

**VAT Code**

6211 43 1000



Colour	Pantone	C	M	Y	K
Black	0	0	0	0	100
Hot Pink	214c	0	100	24	4
Turquoise	312	89	0	11	0

Size	6	8	10	12	14	16	18	20	22	24
<b>Bust to fit "</b>	31	33	35	37	39	41	43	45	47	49
<b>Bust to fit cm</b>	79	84	89	94	99	104	109	114	119	124
<b>Call size</b>	2XS	XS	S	M	L	XL	2XL	3XL	4XL	5XL
<b>Bust actual cm</b>	89	94	99	104	109	114	120	126	132	138
<b>DE,NL</b>	34	36	38	40	42	44	46	48	50	52
<b>FR,ES,PT</b>	34	36	38	40	42	44	46	48	50	52
<b>IT</b>	38	40	42	44	46	48	50	52	54	56

**Marketing Description**

The 'Camellia' beauty and spa tunic has an understated elegance with a cross over contrast neckline and asymmetric zip front. The vented cuff on the short sleeves and the side vents ensure ease of movement whilst the princess seams with added topstitch detail create a very flattering fit.



WASH DARK COLOURS SEPARATELY